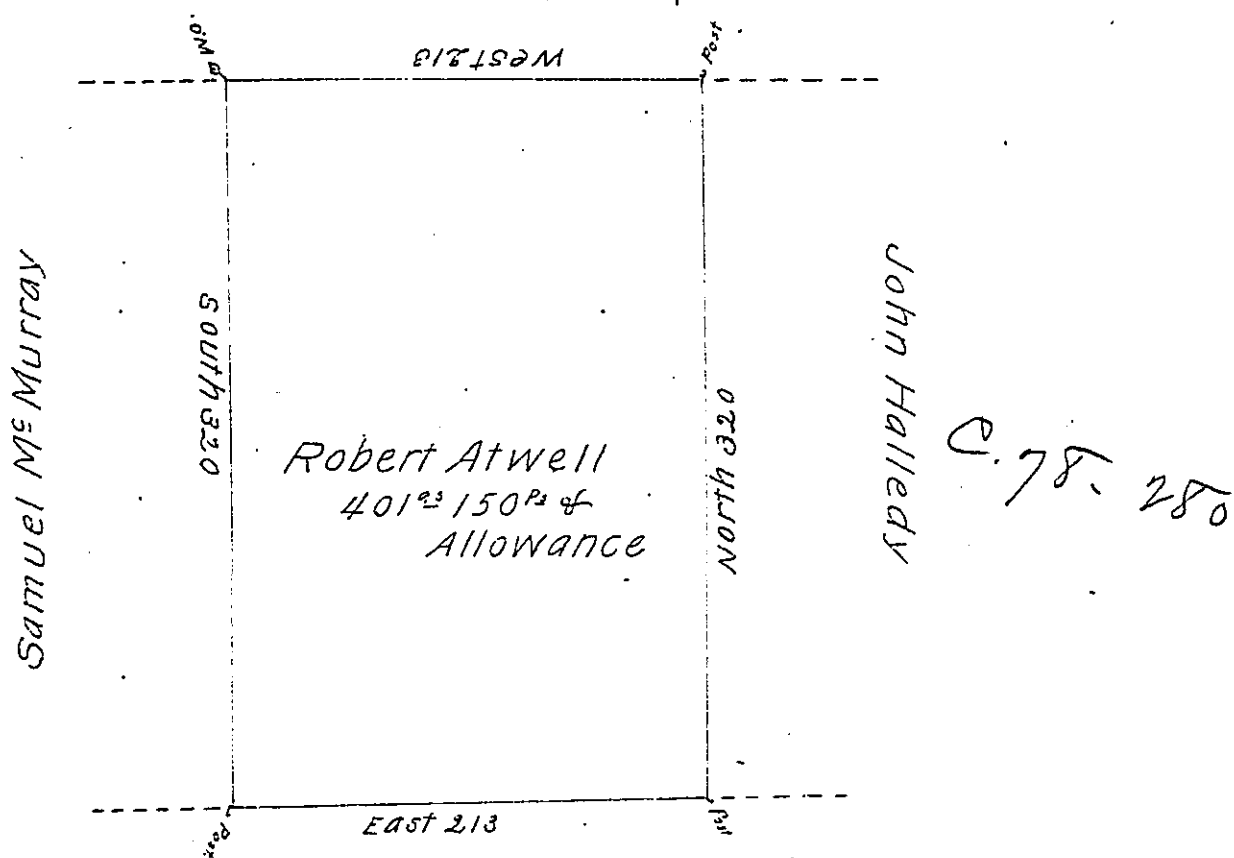


John Atwell

C. 9. 299



C. 153. 280

PATRICK Mc ANALEY

The above is a draft of a Tract of Land which was surveyed to Robert Atwell on the 8<sup>th</sup> day of October 1802 by virtue of his Warrant dated the twenty first day of May 1802 containing four Hundred & one acres and 150 perches & Allowance of Six per cent &c. Including his Actual Settlement & improvement Situate in Slippery rock Township and Butler County.

James Irvine D.S.

To Samuel Cochran Esquire  
 Surveyor General of Pennsylvania

IN TESTIMONY that the above is a copy of the original remaining on file in the Department of Internal Affairs of Pennsylvania, made conformably to an Act of Assembly approved the 16th day of February, 1833, I have hereunto set my Hand and caused the Seal of said Department to be affixed at Harrisburg, this Fifth day of October 1903

*James P. Brown*  
 Secretary of Internal Affairs.